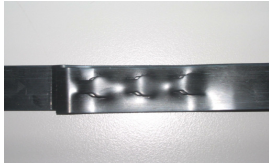


SCM

Sealless Combination Tool for Steel Strapping



Made in the U.S.A.

Easy to operate

- Two-strap loading
- Manual slack pull
- Ergonomically designed to reduce operator fatigue
- Minimal sealing effort

Simple

- No feedwheel adjustments
- Simple cutter adjustments
- Wear parts can be replaced in minutes

Rugged

Manufactured with Signode proven alloys, the SCM is lightweight yet durable enough for the most demanding applications.

Specifications

Strapping:

Works with Signode Apex Plus™ and Magnus® strapping in sizes ranging from 1/2" x .017" to 3/4" x .025" (12.7 mm x 0.43 mm to 19.0 mm x 0.63 mm).

 **SIGNODE®**

3610 West Lake Avenue
Glenview, Illinois 60025