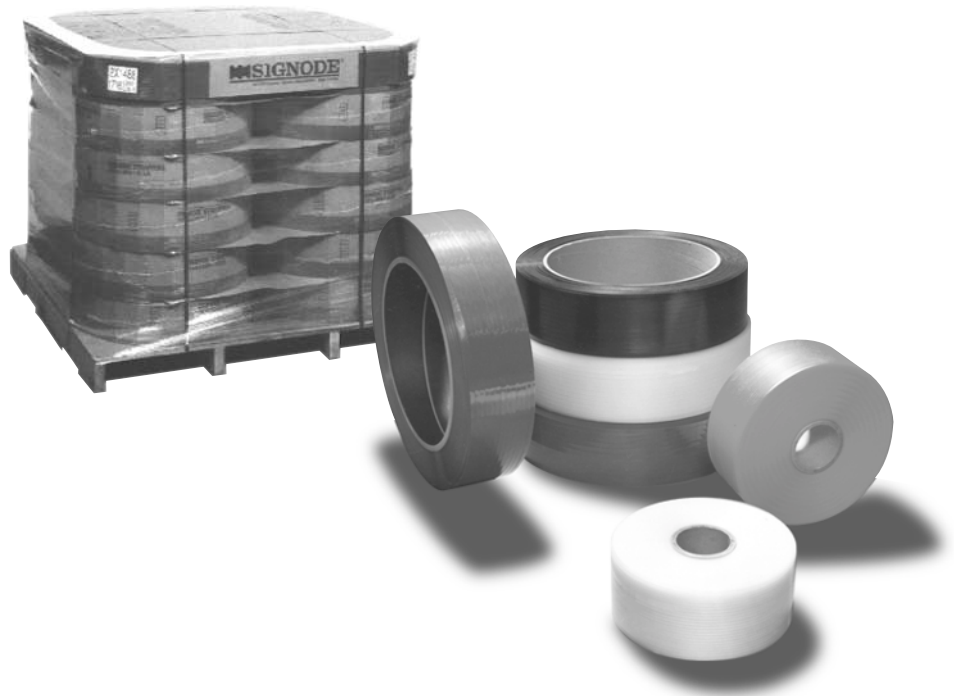


Two types for a wide range of applications

Signode plastic strapping is manufactured for use with both hand tools and high-production power strapping machines. All types have controlled surface properties that minimize tensioning effort, increase tension transmission around corners and improve operating efficiency. All are split-resistant to increase reliability in tools and power equipment.

Specifications for all variations of the two types of Signode plastic strapping are detailed in the following tables, along with general methods of application for each type.



Contrax® strapping—polypropylene base

Strap Name		Standard Color	Strap Width		Average Strength		Approximate Length per Coil		Approx. Coil Outside Dia.		Core Size Inside Dia.		Approximate Coil Width		Coil Weight lbs	Standard Package	Strapping Application Methods
			mm	inch	lbs	N	feet	m	inch	mm	inch	mm	inch	mm			
Light Duty Contrax	LD 213	Clear & Yellow	6	.236	145	640	19,000	5 793	16	406	4	102	6	152	24	30 Coils/Pallet	ML Power Strapping Machines
	LD 216		6	.236	200	890	16,500	5 030	16	406	4	102	6	152	25		
Heavy Duty Contrax	HD 719	Clear & Black	10.5	.413	400	1 780	12,000	3 659	24	609	16	406	6	152	36	12 Coils/Pallet	MCD Power Strapping Machines, Pneumatic Tension-Weld Tools
	HD 723		10.5	.413	500	2 220	9,000	2 744	24	609	16	406	6	152	34		
	HD 729		10.5	.413	600	2 670	7,700	2 348	24	609	16	406	6	152	36		
	816	Black	12	.468	500	2 220	8,000	2 439	24	609	16	406	6	152	33	12 Coils/Pallet	Pneumatic Tension-Weld Tools, Hand Tools using metal seals
818	12		.468	600	2 670	7,000	2 134	24	609	16	406	6	152	35			
LB, SP Light Duty Contrax	LB 113	Clear	5	.197	120	530	25,000	7 622	16	406	7.88	200	7.5	190	31	24 Coils/Pallet	LB, SP & SureTyer Power Strapping Machines
	SP 216	Clear & Yellow	6	.236	200	890	18,000	5 488	16	406	7.88	200	7.5	190	28		
SP General Duty Contrax	SP 616	Clear & Black	9	.354	300	1 330	12,000	3 659	16	406	7.88	200	7.5	190	28	24 Coils/Pallet	HB, SP & SureTyer Power Strapping Machines
	SP 719		10.5	.413	400	1 780	9,000	2 744	16	406	7.88	200	7.5	190	28		
	SP 723		10.5	.413	500	2 220	7,500	2 287	16	406	7.88	200	7.5	190	27		